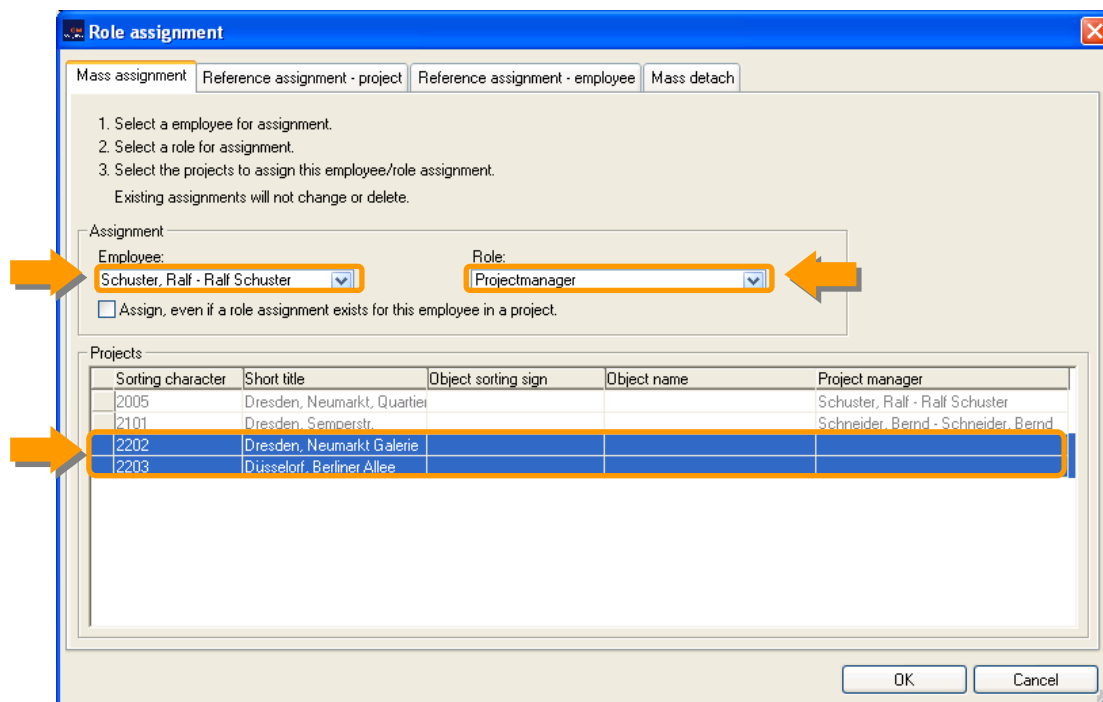


Release notes – conjectCM 3.13.15 1044d

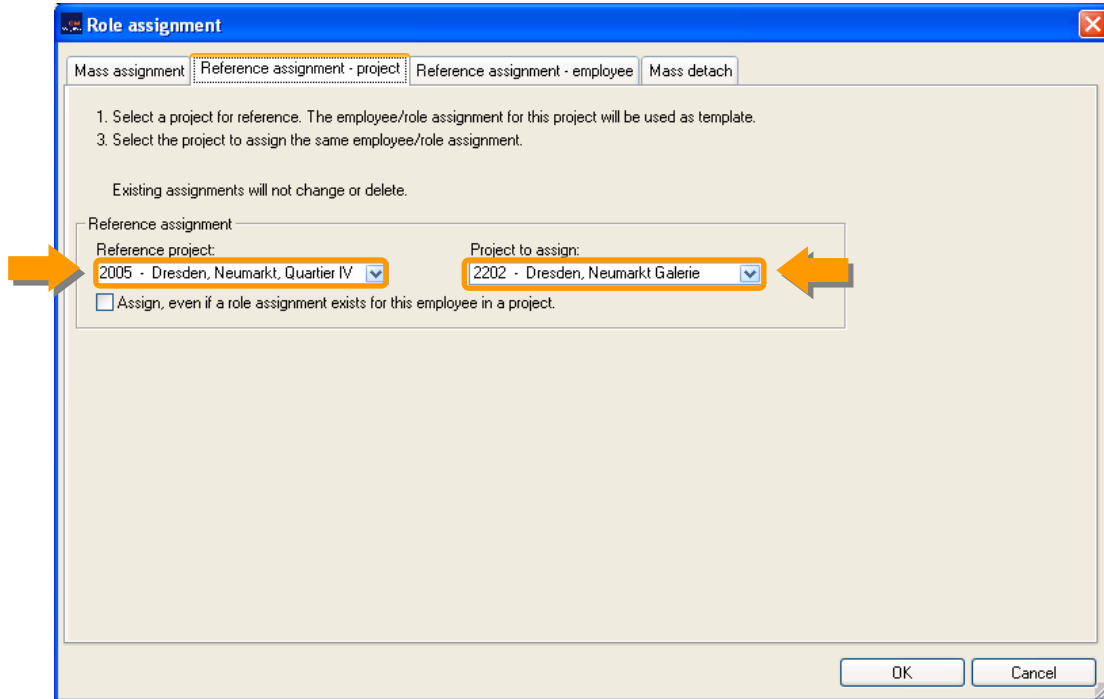
>>> Mass assignment of user role rights

Until recently, when creating a new project, all user roles had to be connected to a corresponding employee and be assigned to a particular project. Adding a new roll or employee afterwards also involved assigning them to a specific project, a process that could get particularly time consuming with increasing numbers of roles or projects. Because of this we added the "mass assignment feature" to conjectCM which can be accessed under the menu "Extra" – "Roll Assignment...".

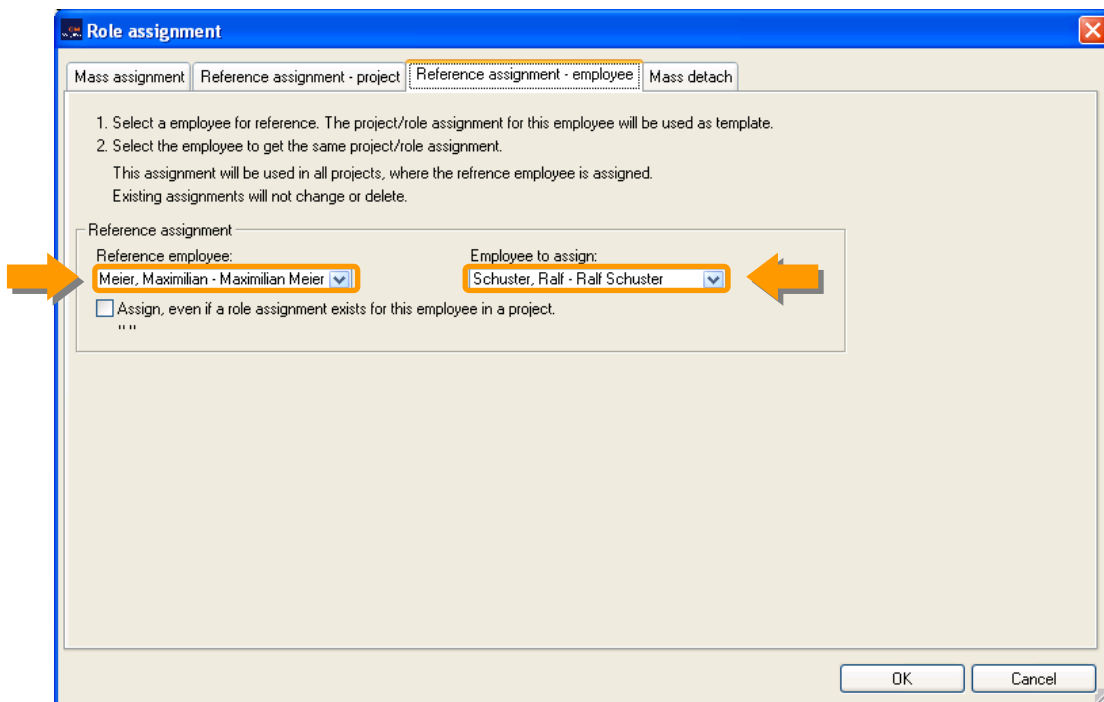
To assign an employee the same role in multiple projects, simply select the employee in the "mass assignment" pane, then the corresponding role and then the desired projects. You can select several project by holding down the "control" key.



You can also assign the entire employee rights scheme of one project to another. This can be done through the "reference assignment – project" pane. Simply select the 'parent' project from which the rights should be transferred and then the 'child' project to which they should be added.



Another option is to transfer the entire rights scheme from one employee to another, a feature which can be accessed under the "Reference assignment – employee" pane.



In addition to mass assigning of employee roll rights, you can also mass detach them. Simply navigate to the "Mass detach" pane, select the desired employee and role and then select the projects from which they should be detached. You can select multiple projects by holding down the "control" key.

Role assignment

Mass assignment | Reference assignment - project | Reference assignment - employee | **Mass detach**

1. Select a employee.
2. Select the project role assigned to this employee in the projects.
3. Select the projects to detach this employee/role assignment.

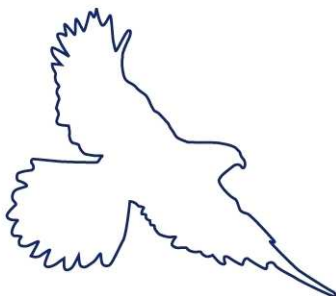
Assignment

Employee: Role:

Projects

Sorting character	Short title	Object sorting sign	Object name	Project manager
2005	Dresden, Neumarkt, Quartier			Schuster, Ralf - Ralf Schuster
2101	Dresden, Semperstr.			Schneider, Bernd - Schneider, Bernd
2202	Dresden, Neumarkt Galerie			
2203	Düsseldorf, Berliner Allee			

OK Cancel



This message details the most recent additions to our product's feature set. Should you have any questions about this latest release or anything else, please don't hesitate to contact us at support@conject.com.

conject AG
Auenstraße 100
80469 München
Tel.: +49 (0)1805-26653287
Fax: +49 (0)89-95414555
support@conject.com

